

SAP Concur 

SAP Concur Fusion Exchange





SAP Concur 

Travel to Reimburse: From Trip Request to Reimbursement, Income Taxation, and Analytics

Katharina Sorge,
Senior Director Product Management, SAP

Hartmut Laser,
Product Manager, SAP

PUBLIC

THE BEST RUN 

Overview

The world is changing faster than ever

And you need to anticipate those changes



Mandates include

- Compliance
- Cash management
- ROI tracking
- Budget management
- Payments

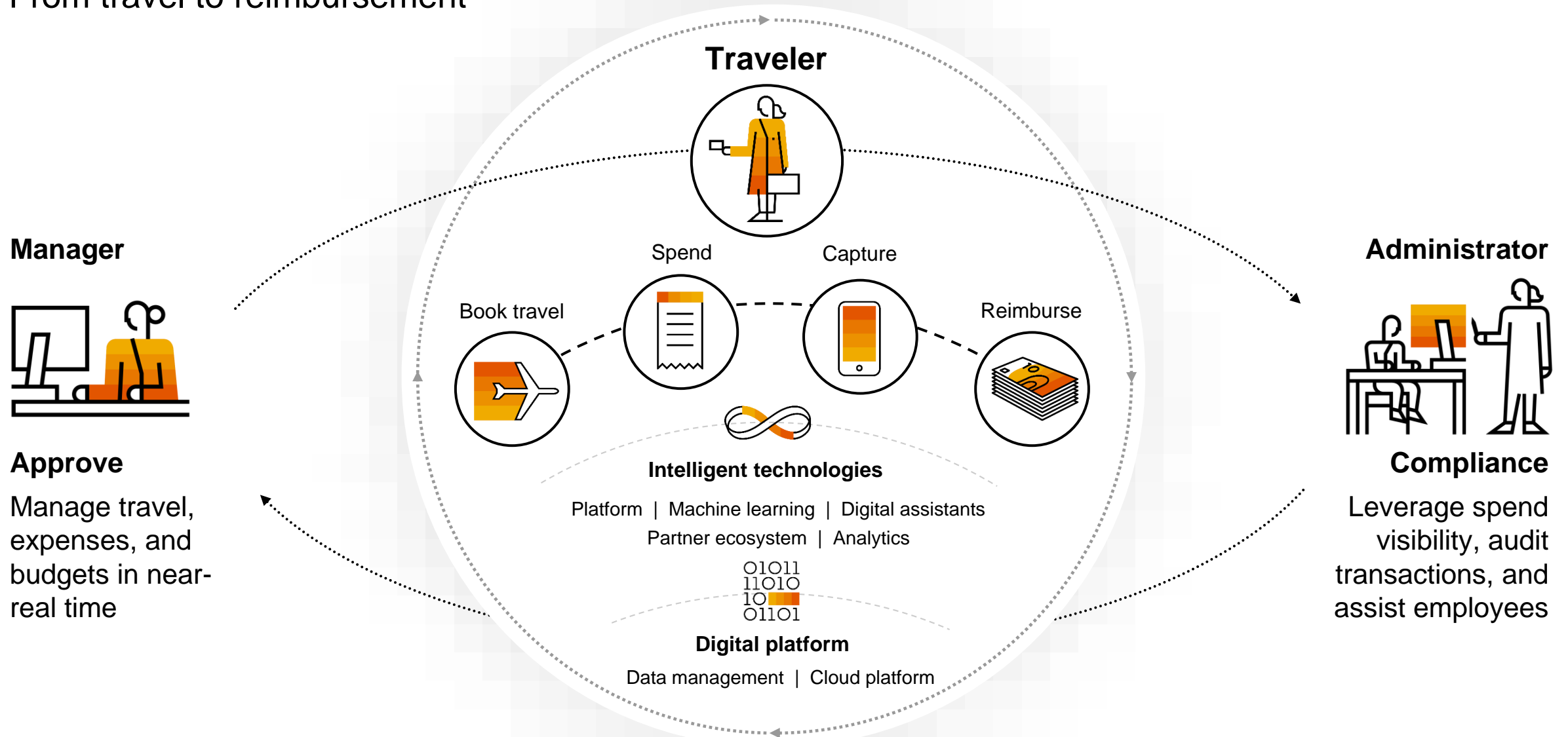


Challenges

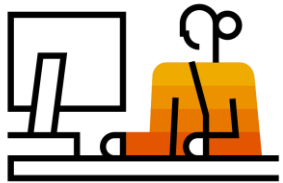
- Invisible spend
- Lack of control
- High volume
- Employee expectations

Make intelligent spend decisions

From travel to reimbursement



Manager



Approve

Manage travel, expenses, and budgets in near-real time

Administrator



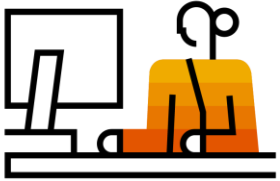
Compliance

Leverage spend visibility, audit transactions, and assist employees

Give managers more control and visibility

Before, during, and after spend occurs

Manager



Approve

Manage travel, expenses,
and budgets in near-real time



Concur Request

- Integrate with Concur Travel & Expense
- Provide insights and projected cost analysis
- Give managers more control and accurate cost forecasts

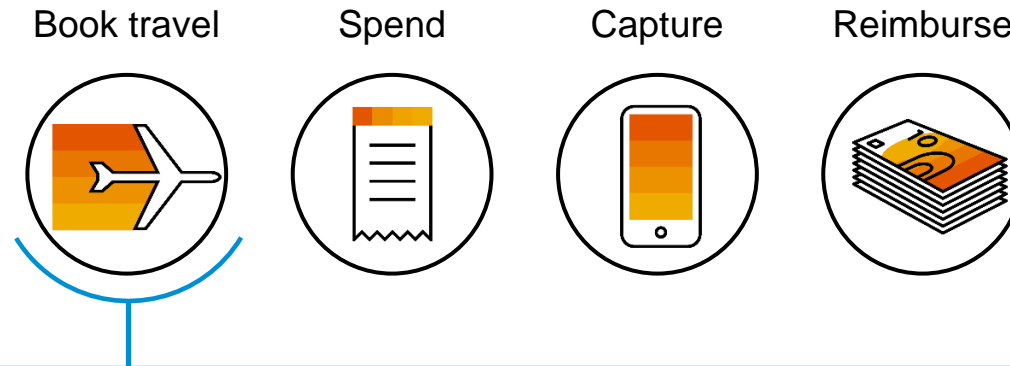


Budget

- Capture and consolidate data for a holistic view of employee spending across the organization
- Control and adjust budgets for changing business needs
- Improve the accuracy and timeliness of spend

Capture travel booking

Wherever it occurs



56%

Of hotel booking
occur outside official
tools

The old way:

- Low visibility
- Incomplete data
- Spotty policy enforcement



You need:

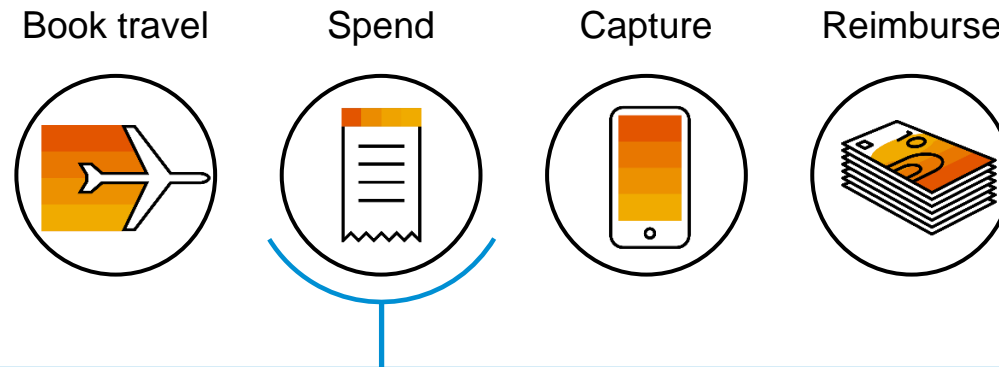
- Visibility into direct booking
- Data for intelligent decisions
- Policy enforcement

SAP solutions:

Concur Travel
Concur TripLink
Concur Request
Budget
SAP S/4HANA
SAP S/4HANA Cloud

Use spend data to help employees

Easier and safer experiences



63%

Of travel managers feel risk to travelers has increased¹

52%

Are expecting further increases in risk in the next year²

51%

Of female business travelers experience sexual harassment³

Help employees travel:

- Deliver one of the most-loved mobile experiences in the industry
- Locate and assist employees in need
- Fulfill your duty of care

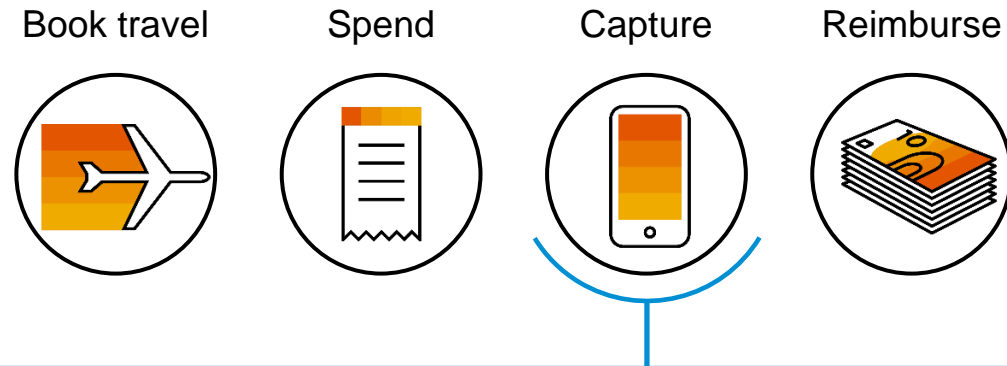
SAP solutions:

SAP Concur mobile app
Concur Expense
Concur Locate and Active Monitoring

1., 2. Predictions of Travel Risk, IPSOS, 2017.
3. Women in Business Travel, Maiden Voyage, 2016.

Capture expenses

Quickly and intuitively



With leading mobile apps and machine-learning powered tools from SAP Concur solutions, employees spend **70% less time on expense reports**, and **49% less time on travel planning**.



Use the power of the Intelligent Enterprise to your advantage to automatically read categorized, itemized, and contextualized expenses in a fully digital process.

SAP solutions:

- SAP Concur mobile app
- Concur Expense
- Concur Drive
- SAP S/4HANA
- SAP S/4HANA Cloud

Pay with speed and accuracy

Expense reimbursement that's fast and compliant

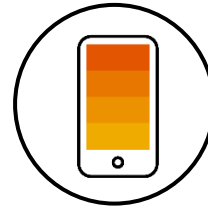
Book travel



Spend



Capture



Reimburse



100%

Expense audit

Use machine learning to audit all your expense reports and go far beyond automation with fast, accurate reimbursement.

Get up-to-date and near-real-time analytics to make more-intelligent decisions.

SAP solutions:

Concur Detect
by AppZen

Intelligence
Analytics

SAP Analytics Cloud

SAP S/4HANA

SAP S/4HANA Cloud

Enable compliance, visibility, and safety

Using your data as currency



SAP Analytics Cloud solution

- Gain data visualization capabilities
- Improve performance management
- Achieve self-service BI reporting



SAP S/4HANA and SAP S/4HANA Cloud

- Award-winning user experience
- Artificial intelligence and next-generation processes
- Cloud, on-premise, or hybrid deployment



Concur Locate and Active Monitoring

- Identify risks with machine learning, travel, and expense data
- Find employees and establish two-way communications
- Deploy local response teams if necessary



Budget

- See employee spending across the organization
- Control and adjust budgets for changing business needs
- Improve the accuracy and timeliness of spend

Administrator



Compliance

Leverage spend visibility, audit transactions, and assist employees

Powering Success

Secure Foundation for Business Agility and Visibility



SAP HANA Data Management Suite

- Delivers trusted, enriched data across your enterprise
- Increases agility by reducing complexity and time to market
- Deploys securely on-premises or in the cloud



SAP Leonardo

- Optimize existing processes for efficiency and agility
- Extend business processes to focus on new sources of value
- Transform company value chains and business models



SAP Analytics

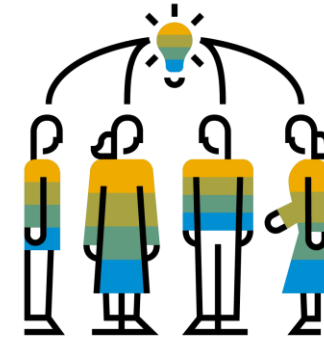
- Deliver insights, adapt on the fly and stay ahead of competition
- Make focused, more confident data-driven business decisions
- Drive agility across your organization and drive better outcomes



Cloud Platform

- Extend core capabilities with additional functionality to meet unique business needs
- Build innovative business applications that differentiate your business while keeping focus on core competencies
- Respond and adapt quickly to changing market conditions with new, innovative applications

IT Management



Enablement

Deliver the value to your business quickly and securely with Intelligent Technologies and a Digital Platform designed for your environment.

Extended solutions and partner integrations add value

SAP Cloud Platform



SAP S/4HANA Cloud
(Live)

SAP SuccessFactors solutions
(Future)

SAP Business ByDesign
(Integration in Early Access)

SAP Concur solutions



SAP ERP 6.0+
(Live)

SAP S/4HANA
(Live)

Concur Expense

Concur Drive
Budget
P-Card Integration
Expense Pay Global
Expense Report Auditing

Concur Travel

Concur Locate & Active
Monitoring
Concur Request
Concur TripLink (Triplt Pro)
TMC Services & Integrations

Concur Invoice

Purchase Request
Invoice Capture
Three-Way Match
Invoice Pay



Comprehensive employee-initiated
spend reporting and analytics across
SAP Concur solutions.



End-user and
admin support for
your people when
they need it.



Auditing
services against
your company's
policies.

Connections



Logos shown represent a sample. See the entire partner network [here](#).

Travel-to-reimburse scenario (planned)

Administration

SAP S/4HANA

Setup connectivity

Wizard-driven setup

Transfer of cost objects

Cost center, sales order, network, WBS elements



Onboarding

Transfer of employee data inclusive cost object assignments

Budget planning

Budgets that are understood and assigned



Offline documentation

Communication monitoring

(Connectivity, object based)

SAP Analytics

Cloud reporting

Travel

SAP Concur



Book travel

Update cost-center forecast and budget

Budget check

Including potential approval



Expense

SAP Concur



Capture receipts



Maintain expense report



Approve expense report

Submit expense report

Change expense report

Fix Errors

Update expense-report status

Reimbursement

SAP S/4HANA

Post expense report

Add receipts to the posting

Payroll posting

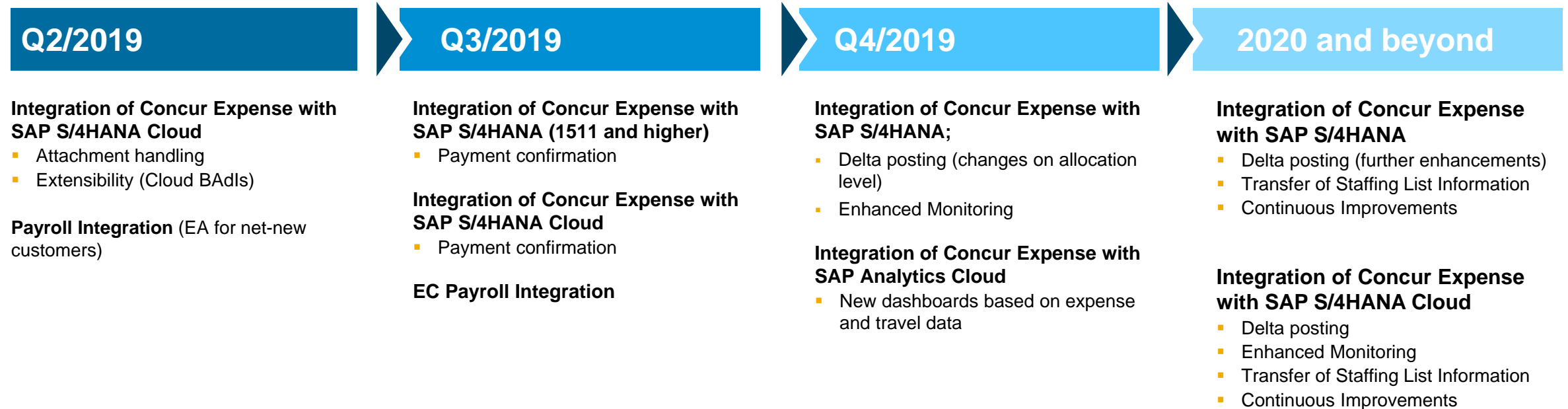
If needed

Payment run



SAP Concur solution integration

Travel to reimburse

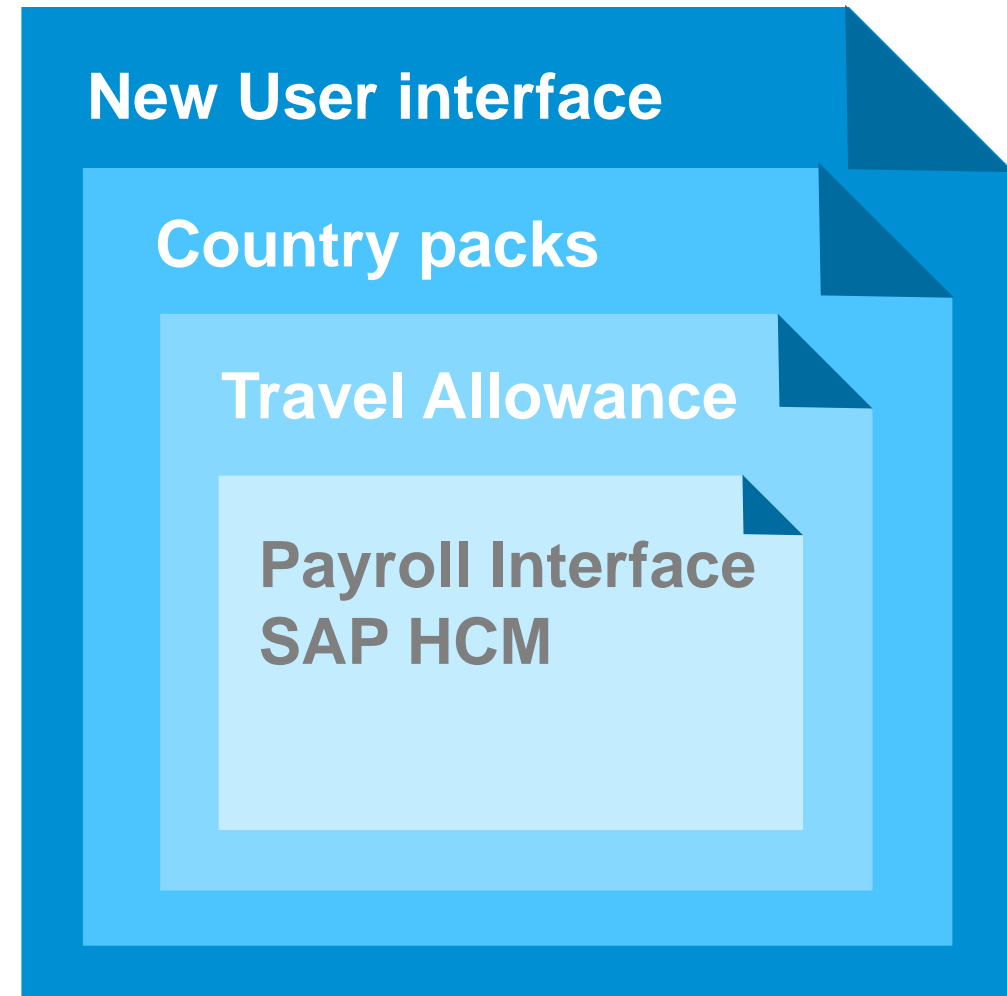


1. Potential data protection and privacy features include simplified deletion of personal data, reporting of personal data to an identified data subject, restricted access to personal data, masking of personal data, read access logging to special categories of personal data, change logging of personal data, and consent management mechanisms.
2. This is the current state of planning and may be changed by SAP at any time without notice.

Proof point – The new Travel Allowance **Solution**

New Travel Allowance Solution – the package

- Improved User Interface
- Self-updating country packs
- Automated updates of regulatory rates and rules
- Enhanced support for company specific rules
- Native integration into SAP HCM Payroll



New Travel Allowances - Itinerary

Itinerary Name *

Detailed Itinerary ?

Contract Type

Travel type (customer visit, training, etc)

Start Location *

Start Date *

Start Time *

+ Add Destination

Arrival Location *

Simplified destination entry

+ Add Destination

End Location *

End Date *

End Time *

Regulatory and company rules in separate spaces

Regulatory rates

- Germany
- Denmark
- Portugal
- Sweden
- Etc.



Company rates

- Higher rates
- Lower deductions
- Define exceptions only



Payroll Interface

- Map amounts with wage types
- Benefits in kind

Country packs - availability

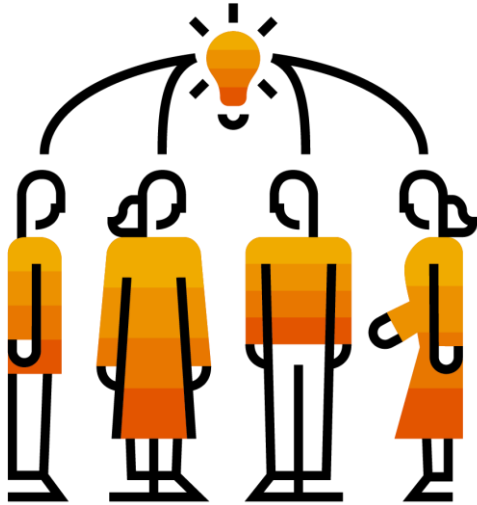
Delivered

- Germany
- Denmark
- Portugal

Planned

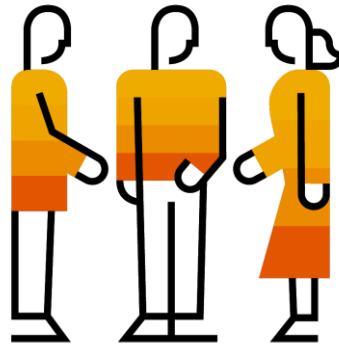
- Sweden, Norway, Finland
- Spain, Italy
- Poland, Czech Republic, Slovakia
- US (GSA per diems)
- Russia, Austria (regulatory rules only, limited support for collective agreements)





Early access 2019

- Open for new customers
- Depending on country roadmap



Opt-in Period 2020

- New and existing customers



Planned 2021

- All customers on new travel allowance solution

Q&A



Vielen Dank.

Kontakt:

SAP

Katharina Sorge

Senior Director Product Management

katharina.sorge@sap.com

Kontakt:

SAP

Hartmut Laser

Product Manager

hartmut.laser@sap.com

SAP Concur folgen:



www.concur.de

© 2019 SAP SE oder ein SAP-Konzernunternehmen. Alle Rechte vorbehalten.

Weitergabe und Vervielfältigung dieser Publikation oder von Teilen daraus sind, zu welchem Zweck und in welcher Form auch immer, ohne die ausdrückliche schriftliche Genehmigung durch SAP SE oder ein SAP-Konzernunternehmen nicht gestattet.

In dieser Publikation enthaltene Informationen können ohne vorherige Ankündigung geändert werden. Die von SAP SE oder deren Vertriebsfirmen angebotenen Softwareprodukte können Softwarekomponenten auch anderer Softwarehersteller enthalten. Produkte können länderspezifische Unterschiede aufweisen.

Die vorliegenden Unterlagen werden von der SAP SE oder einem SAP-Konzernunternehmen bereitgestellt und dienen ausschließlich zu Informationszwecken. Die SAP SE oder ihre Konzernunternehmen übernehmen keinerlei Haftung oder Gewährleistung für Fehler oder Unvollständigkeiten in dieser Publikation. Die SAP SE oder ein SAP-Konzernunternehmen steht lediglich für Produkte und Dienstleistungen nach der Maßgabe ein, die in der Vereinbarung über die jeweiligen Produkte und Dienstleistungen ausdrücklich geregelt ist. Keine der hierin enthaltenen Informationen ist als zusätzliche Garantie zu interpretieren.

Insbesondere sind die SAP SE oder ihre Konzernunternehmen in keiner Weise verpflichtet, in dieser Publikation oder einer zugehörigen Präsentation dargestellte Geschäftsabläufe zu verfolgen oder hierin wiedergegebene Funktionen zu entwickeln oder zu veröffentlichen. Diese Publikation oder eine zugehörige Präsentation, die Strategie und etwaige künftige Entwicklungen, Produkte und/oder Plattformen der SAP SE oder ihrer Konzernunternehmen können von der SAP SE oder ihren Konzernunternehmen jederzeit und ohne Angabe von Gründen unangekündigt geändert werden. Die in dieser Publikation enthaltenen Informationen stellen keine Zusage, kein Versprechen und keine rechtliche Verpflichtung zur Lieferung von Material, Code oder Funktionen dar. Sämtliche vorausschauenden Aussagen unterliegen unterschiedlichen Risiken und Unsicherheiten, durch die die tatsächlichen Ergebnisse von den Erwartungen abweichen können. Dem Leser wird empfohlen, diesen vorausschauenden Aussagen kein übertriebenes Vertrauen zu schenken und sich bei Kaufentscheidungen nicht auf sie zu stützen.

SAP und andere in diesem Dokument erwähnte Produkte und Dienstleistungen von SAP sowie die dazugehörigen Logos sind Marken oder eingetragene Marken der SAP SE (oder von einem SAP-Konzernunternehmen) in Deutschland und verschiedenen anderen Ländern weltweit. Alle anderen Namen von Produkten und Dienstleistungen sind Marken der jeweiligen Firmen.

Zusätzliche Informationen zur Marke und Vermerke finden Sie auf der Seite www.sap.com/corporate/de/legal/copyright.html.